



Sonesse 30 WireFree RTS

EN Instructions

ORIGINAL INSTRUCTIONS

These instructions apply to all Sonesse 30 WireFree RTS drive, the different versions of which are available in the current catalogue.

CONTENTS

1. Prior information	2	3. Operation and maintenance	9
1. 1. Sphere of application	2	3. 1. Mode selection: Roller or Tilting mode	9
1. 2. Liability	2	3. 2. Controlling Up, Down, My: In roller mode	9
2. Installation	3	3. 3. Controlling Up, Down, My: In Tilting mode	9
2. 1. Assembly	3	3. 4. Adjusting the tilting speed	10
2. 2. Wiring	4	3. 5. Favorite (my) position	10
2. 3. Commissioning	4	3. 6. Adjusting the speed	11
2. 4. Tips and advice on installation	6	3. 7. Tips and advice on operation	11
		4. TECHNICAL DATA	12

1. PRIOR INFORMATION

1. 1. SPHERE OF APPLICATION

Sonesse 30 drive are designed to drive most types of interior roller and roman blinds.

The installer, a home motorisation or home automation professional, must ensure that once the driven product is installed, it respects the current standards in the country of installation, notably standard EN 13120 relative to interior blinds.

1. 2. LIABILITY

Before installing and using the drive, please read these instructions carefully. In addition to the instructions provided in this guide, please also comply with the instructions set out in the enclosed **Safety instructions** document.

The drive must be installed by a home motorisation and automation professional, in accordance with Somfy's instructions and the applicable regulations in the country of installation.

Any operation of the drive outside the sphere of application described above is prohibited. Such operation shall exclude Somfy from all liability and invalidate the Somfy warranty, as will any failure to comply with the instructions given herein and in the enclosed **Safety instructions** document.

After installing the drive, the installer must inform his customers of the operating and maintenance conditions for the drive and must pass the operating and maintenance instructions on to them, as well as the enclosed **Safety instructions** document. Any After-Sales Service operation on the drive requires intervention by a home motorisation and automation professional.

Should any doubt arise during installation of the drive or for additional information, consult a Somfy contact or visit www.somfy.com.



Safety Warning !



Warning !



Information

2. INSTALLATION



These instructions are **mandatory** for the home motorisation and automation professional installing the drive.



Never drop, knock or puncture the drive or immerse it in liquid.

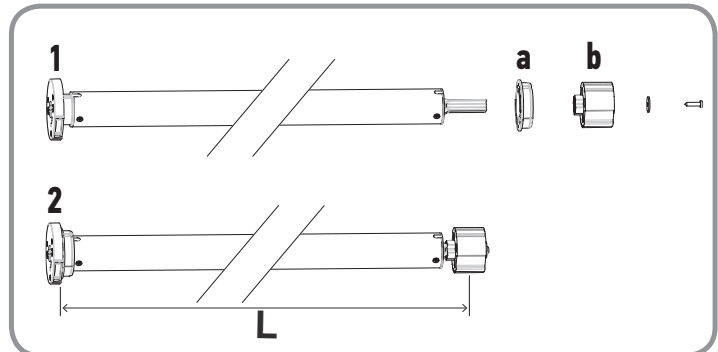


Install an individual control point for each drive.

2. 1. ASSEMBLY

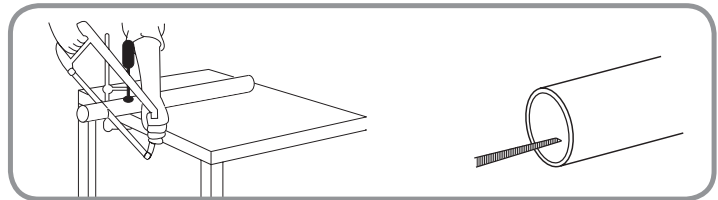
2. 1. 1. Drive preparation

- 1) Fit the crown (a) and drive wheel (b) to the motor.
- 2) Measure the length (L) between the end of the drive wheel and the head end.



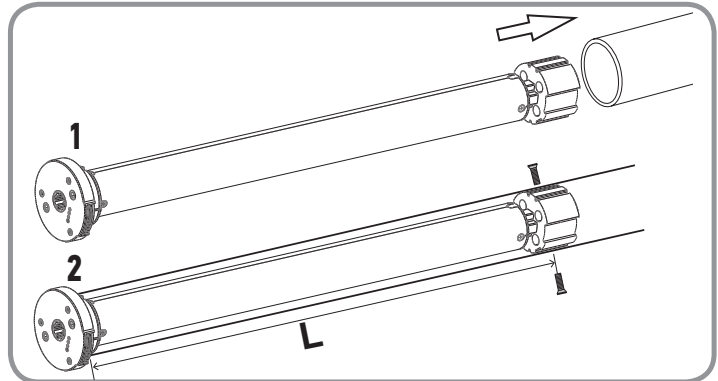
2. 1. 2. Tube preparation

Cut the tube to the required length.
Deburr the tube and remove the debris.



2. 1. 3. Drive/tube assembly

- 1) Slide the drive into the tube. Insert the wheel by aligning the wheel to the tube profile. Insert the drive half way and then slide the crown down the drive and insert it in the tube. Finally, push the motor inside the tube.
- 2) Not required, but if needed, fix the tube to the drive with self-tapping screws or steel pop rivets depending on the dimension (L).

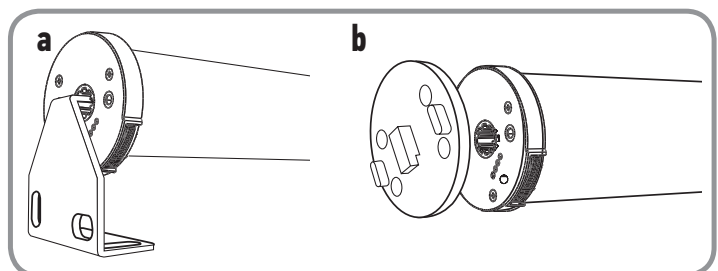


2. 1. 4. Mounting the tube-drive assembly on the brackets


- a) Standard bracket
- b) Drive plate for specific bracket




For optimal radio reception, the motor antenna should be kept straight and should be positioned outside of headrail (if used).



2. 2. WIRING

 To ensure electrical safety, this Class III motor must be powered by a «SELV» voltage source (Safety Extra Low Voltage).

 Use power charger (recommended by Somfy) to charge the drive battery. Ensure battery is fully charged prior to installation.

- 1) Connect the charger to the cable attached to drive.
- 2) LED on charger will illuminate as follows:
 - Solid Red = Charging
 - Solid Orange = Charging is near completion
 - Solid Green = Charging is complete
- 3) When charging is complete, disconnect and store charger for later use.

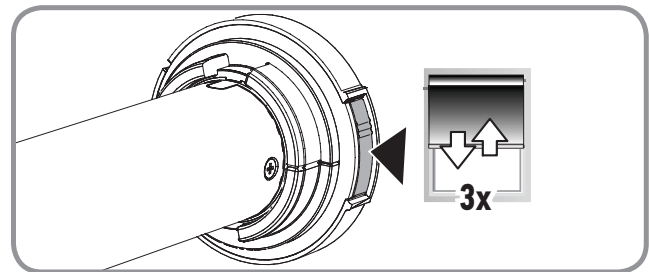
 The drive will go back to sleep if left untouched for 15 minutes.


2. 3. COMMISSIONING

2. 3. 1. wake up the drive

For initial unpacking of drive, wake up the drive by briefly pressing the motor head programming button or plugging in the charger.

The driven product briefly moves Up and Down 3 times.



 To avoid accidental programming of drive(s) once awake, follow section “Activate/Deactivate “RTS” radio technology when control point is temporarily preprogrammed (not paired) to the driven product” to deactivate RTS.

2. 3. 2. Preprogramming the control point

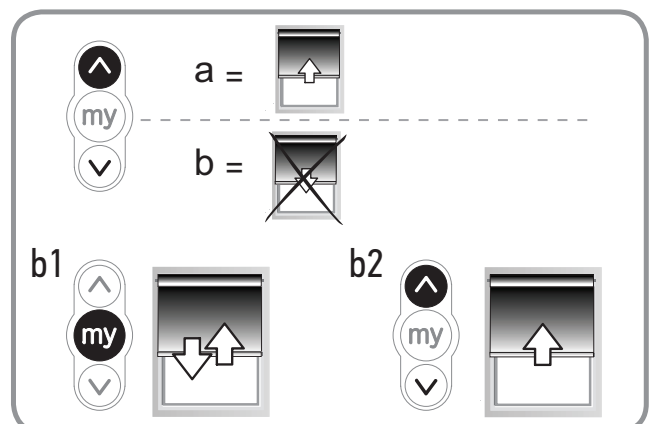
Press the UP and DOWN buttons simultaneously on the control point:

the driven product moves Up and Down and the control point is temporarily programmed to driven product.

2. 3. 3. Checking the rotation direction

Press the control point UP button:

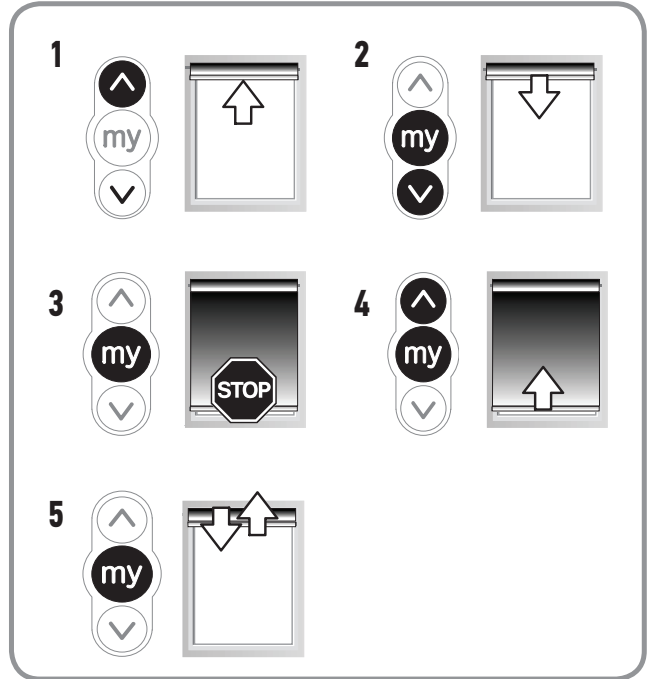
- a) If the driven product raises (a), the rotation direction is correct: proceed to section “Setting the end limits”.
- b) If the driven product is lowers (b), the rotation direction is incorrect: move to the next step.
 - b1) Press the control point MY button until the driven product moves Up and Down: the rotation direction has been modified.
 - b2) Press the control point UP button to confirm the rotation direction.



2. 3. 4. Setting the end limits

i The end limits can be set in any order.

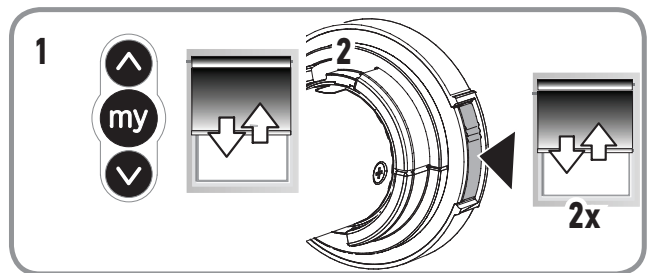
- 1) Press and hold the UP button to move the driven product to the desired Up position. If necessary, adjust the Up position using the UP or DOWN buttons.
- 2) **To memorize the UP limit:** Press the MY and DOWN buttons simultaneously and release once the driven product begins to move. The Up limit is now memorized.
- 3) Press the MY button when the driven product reaches the desired Down position. If necessary, adjust the down position using the UP or DOWN buttons.
- 4) **To memorize the Down limit:** Press the MY and UP buttons simultaneously and release when the driven product begins to move. The Down limit is now memorized. The driven product moves up and will stop at its upper limit.
- 5) **To confirm and complete limit programming:** Press and hold the MY button until the driven product briefly moves Up and Down. The end limits are now recorded.



2. 3. 5. Activate/Deactivate “RTS” radio technology when control point is temporarily preprogrammed (not paired) to the driven product.

i This function is used to deactivate the radio transmission to save the battery life during shipment, or when the product will not be used for an extended amount of time (ex: storage).

- 1) To deactivate the “RTS” Radio Technology Somfy, press the UP, MY and DOWN buttons simultaneously, until the driven product briefly moves Up and Down once.
- 2) To activate the “RTS” Radio Technology Somfy, briefly press the motor head programming button, the driven product briefly moves Up and Down three times.

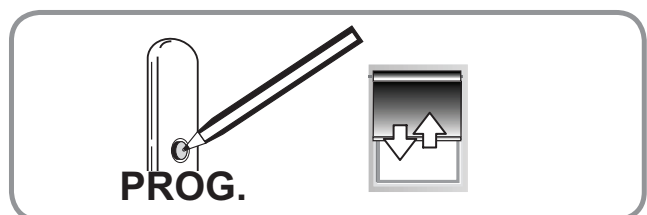


2. 3. 6. Recording “Pairing” the control point

After recording the end limits:

Briefly press the control point programming button. The driven product will briefly move Up and Down to confirm pairing.

The **control point** is recorded “paired” to driven product.



2. 4. TIPS AND ADVICE ON INSTALLATION

2. 4. 1. Questions about the drive?

Observations	Possible causes	Solutions
The driven product does not operate.	Drive battery is low and requires charge.	Charge the battery.
	The control point battery is low.	Check the battery and replace it as required.
	The control point is not compatible or not programmed.	Check the compatibility and replace the control point as required.
	The thermal protection has activated.	Wait for the drive to cool down.
The driven product stops too soon.	The end limits are incorrectly programmed.	Reset the end limits.
	The driven product has exceeded recommended weight limit.	Replace driven product.
	Battery is low.	Charge the battery.
Red LED blinks slowly for 3 seconds before and after motor running.	Battery is low. Battery capacity is less than or equal to 5%.	Charge the battery.

2. 4. 2. End limit readjustment



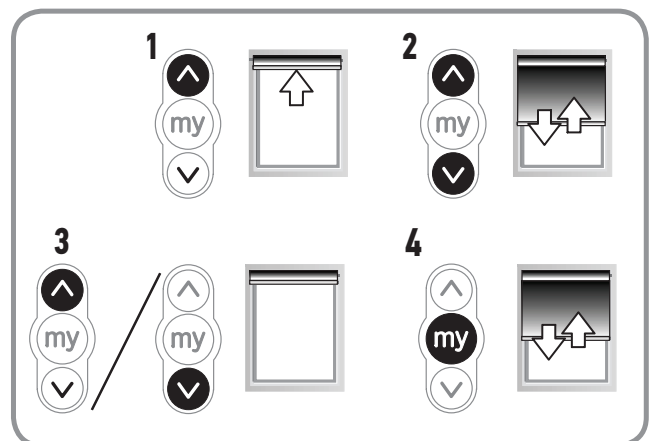
Control point must be paired to the driven product.



Green LED lights on for Up limit adjusting and blinks slowly for Down limit adjusting.

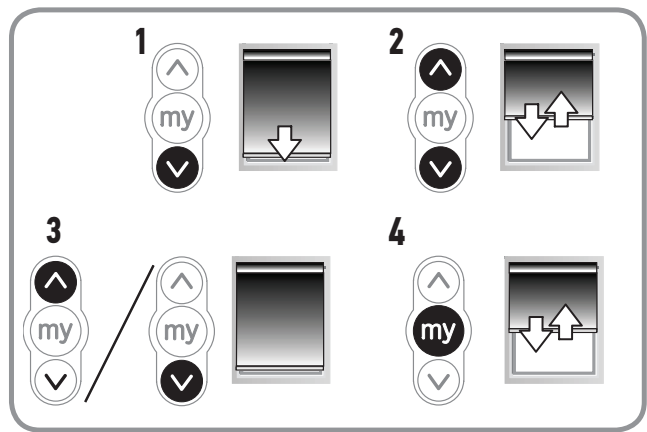
Readjusting the upper end limit

- 1) Briefly press the UP button, to move the driven product to the upper end limit.
- 2) Press and hold the UP and DOWN buttons simultaneously until the driven product briefly moves Up and Down.
- 3) Press and hold the UP or DOWN button to move the driven product to the new desired position.
- 4) To confirm the new position press and hold the MY button until the driven product briefly moves Up and Down.



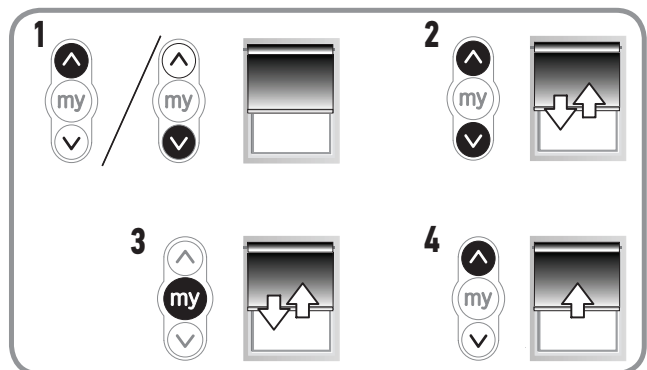
Readjusting the lower end limit

- 1) Briefly press the DOWN button to move the driven product to the lower end limit.
- 2) Press and hold the UP and DOWN buttons simultaneously until the driven product briefly moves Up and Down.
- 3) Press and hold the UP or DOWN button to move the driven product to the new desired position.
- 4) To confirm the new position press and hold the MY button until the driven product moves Up and Down.



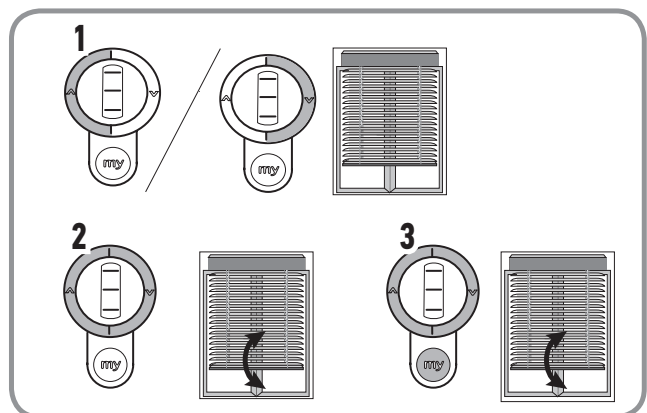
2. 4. 3. Modifying the motor rotation direction

- 1) Using the UP or DOWN button on the control point, move the driven product away from the end limits.
- 2) Press and hold the UP and DOWN buttons simultaneously until the driven product briefly moves Up and Down.
- 3) Press the MY button until the driven product briefly moves Up and Down to reverse the rotation direction.
- 4) Press the UP button to check the new rotation direction. The motor rotation direction is reversed.



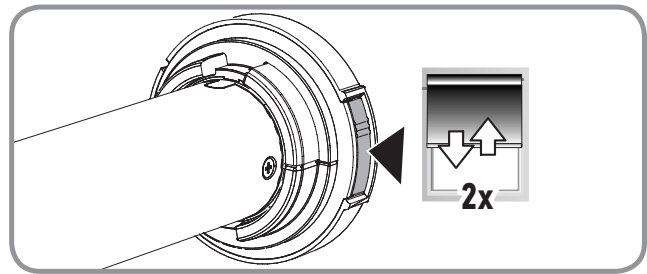
2. 4. 4. Modifying the wheel rotation direction

- 1) Using the UP or DOWN button on the control point, move the driven product away from the end limits.
- 2) Press and hold the UP and DOWN buttons simultaneously until the driven product briefly moves Up and Down.
- 3) Press the UP, MY and DOWN buttons simultaneously, until the driven product briefly moves Up and Down, wheel rotation is reversed.



2. 4. 5. Erasing control points (transmitters) from memory

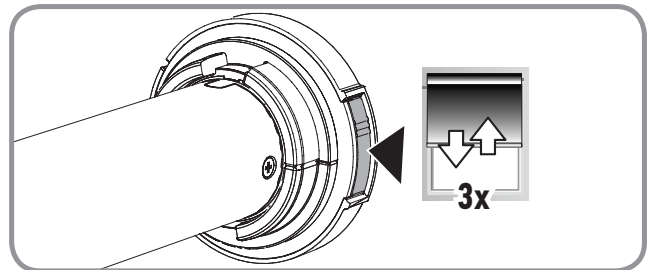
To delete all the programmed transmitters, press and hold the motor head programming button until the driven product briefly moves Up and Down twice. All programmed control points (transmitters) are deleted.



2. 4. 6. Erasing the memory of the motor (factory default)

To reset the motor, press and hold the motor head programming button until the driven product briefly moves Up and Down 3 times.

All the settings are erased.



2. 4. 7. Sleeping mode

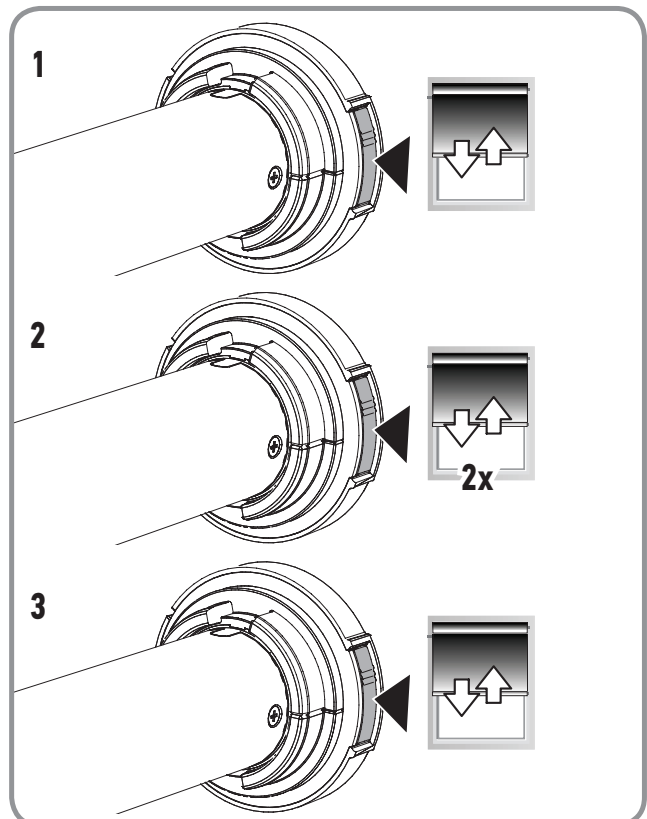


The driven product must be programmed.



This feature temporarily prevents the drive product from responding to any previously programmed control points (transmitter) commands.

- 1) Press and hold the motor head programming button until the driven product briefly moves Up and Down.
- 2) Briefly press the motor head programming button, the driven product briefly moves Up and Down twice. "Sleeping mode" is activated.
- 3) To deactivate the "Sleeping mode", briefly press the motor head programming button. The driven product briefly moves Up and Down, the control point (transmitter) commands are enabled.



3. OPERATION AND MAINTENANCE

3. 1. MODE SELECTION: ROLLER OR TILTING MODE

The Sonesse 30 WireFree RTS is designed to work in 2 modes: Tilting mode or Roller mode.

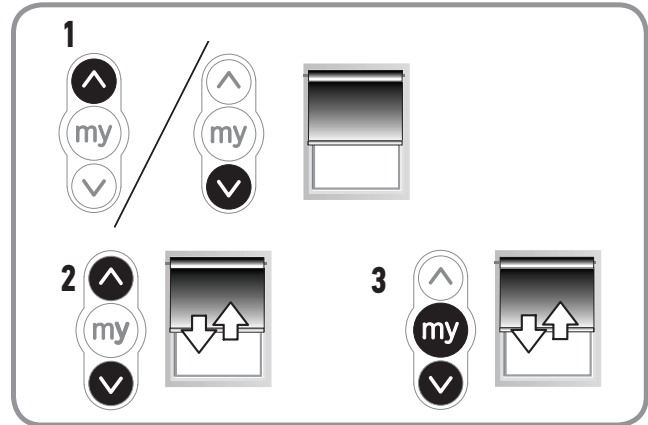
This feature allows the Sonesse 30 WireFree RTS to be set according to the type of application.

i The Sonesse 30 WireFree RTS is set (by default) to work in Roller mode.

i Yellow LED lights on in Roller mode.

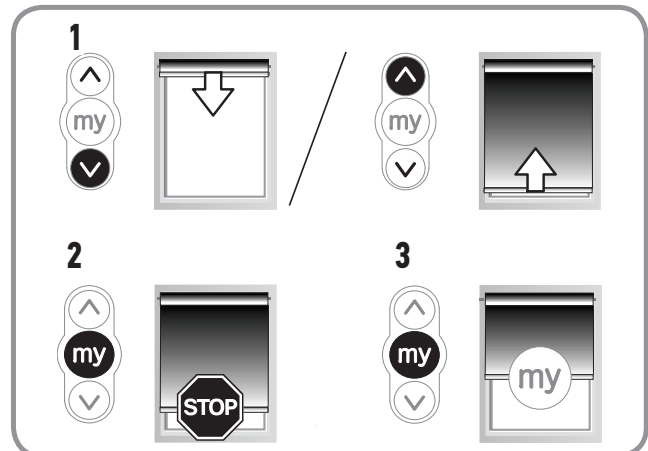
- 1) Move the driven product away from the end limits.
- 2) Simultaneously press and hold the UP and DOWN buttons until the driven product briefly moves Up and Down.
- 3) Press and hold the MY and DOWN buttons simultaneously until the driven product briefly moves Up and Down to change from Roller mode to Tilting mode.

i Yellow LED blinks slowly in Tilting mode.



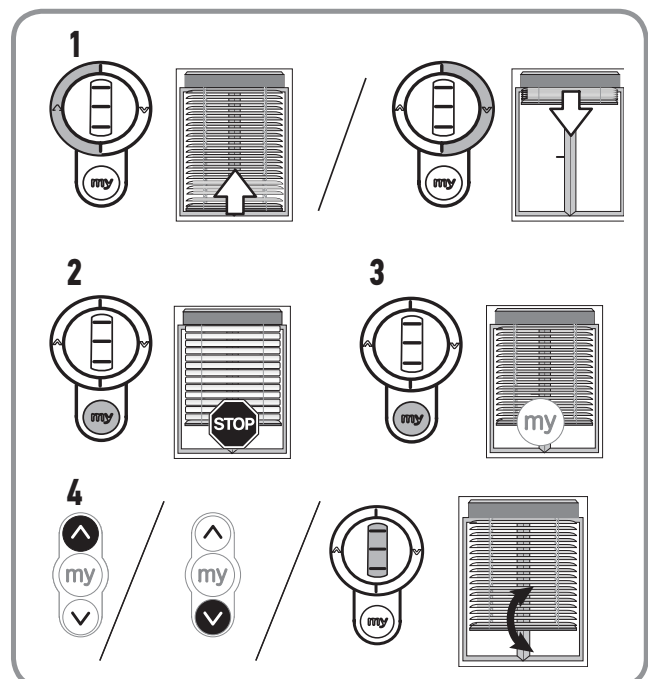
3. 2. CONTROLLING UP, DOWN, MY: IN ROLLER MODE

- 1) To move the driven product from a limit to the other limit, briefly press the UP or DOWN button.
- 2) To stop the driven product, briefly press the MY button.
- 3) (If a my position is recorded) To move the driven product to the my position, briefly press the MY button.



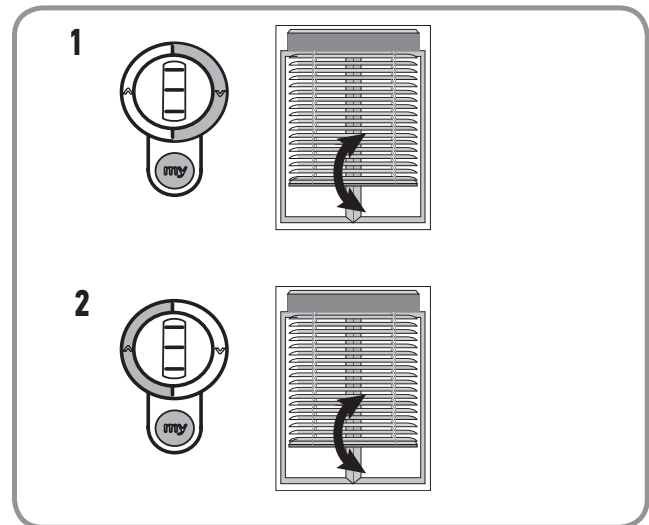
3. 3. CONTROLLING UP, DOWN, MY: IN TILTING MODE

- 1) To move the driven product from a limit to the other limit, briefly press (less than 0,5s) the UP or DOWN button.
- 2) To stop the driven product, press the MY button.
- 3) (If a my position is recorded) To move the driven product to the my position, briefly press the MY button. The driven product will automatically travel to the down end limit (first) then to the my position.
- 4) To tilt the slats, press and hold the UP or DOWN button or use the scroll of the remote control, until the slats reach the desired position.



3. 4. ADJUSTING THE TILTING SPEED

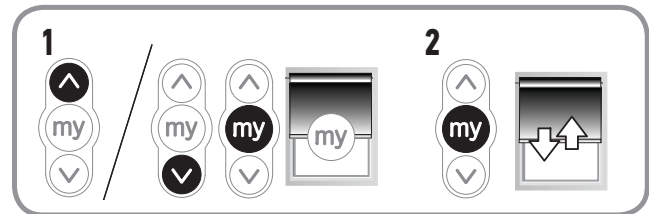
- 1) To decrease the tilting speed, press and hold the MY and DOWN buttons simultaneously until the driven product briefly moves Up and Down. Repeat as needed. The minimum speed has been reached when the driven product no longer moves Up and Down.
- 2) To increase the tilting speed, press and hold the STOP and UP buttons simultaneously until the driven product briefly moves Up and Down. Repeat as needed. The minimum speed has been reached when the driven product no longer moves Up and Down.



3. 5. FAVORITE (my) POSITION

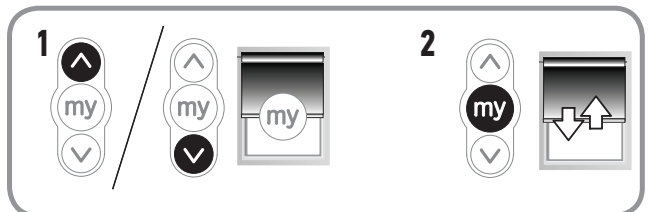
i A intermediate stop or “favorite (my) position,” which is commonly used between the fully Up and Down positions.

- 1) To set this function, move the driven product to the desired position using the UP or DOWN button. Briefly press MY button to stop the driven product.
- 2) Press and hold the MY button until the driven product moves Up and Down. Favorite (my) position is set.



3. 5. 1. To modify the favorite (my) position

- 1) Use the UP or Down button to move the driven product to the NEW desired favorite (my) position.
- 2) Press the My button to stop the driven product.
- 3) Press and hold the MY button until the driven product briefly moves Up and Down. The new favorite (my) position is programmed.

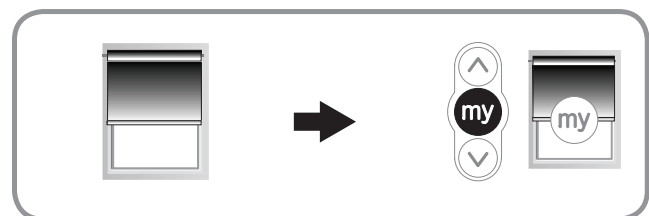


i Only one favorite (my) position is permitted.

3. 5. 2. To use the favorite (my) position

Hand icon The driven product must be stopped.

- Briefly press the MY button: the driven product moves to the favorite (my) position.



3. 6. ADJUSTING THE SPEED

i LED blinks alternately in green and Yellow.

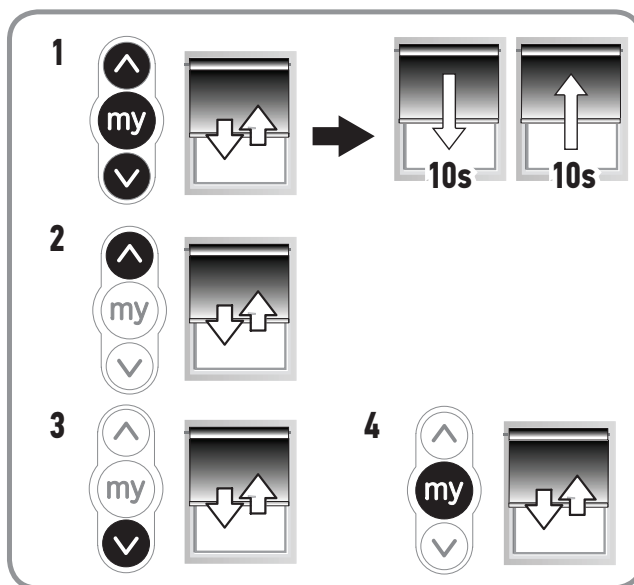
- 1) Move the driven product away from the end limits. Press and hold the UP, MY and DOWN buttons simultaneously, until the driven product briefly moves Up and Down once. The driven product will move UP and Down automatically in ten second cycles.
- 2) To increase the speed, press and hold the UP button until the driven product briefly moves Up and Down. Repeat as needed.

i Maximum speed is achieved when the driven product no longer responds to the press of the UP button.

- 3) To decrease the speed, press and hold the DOWN button until the driven product briefly moves Up and Down. Repeat as needed.

i Minimum speed is achieved when the driven product no longer responds to the press of the DOWN button.

- 4) To confirm the new speed, press and hold the MY button until the driven product briefly moves Up and Down.



3. 7. TIPS AND ADVICE ON OPERATION

Observations	Possible causes	Solutions
The driven product does not operate.	The thermal protection has activated.	Wait for the drive to cool down.
	The control point battery is low.	Change battery as required.

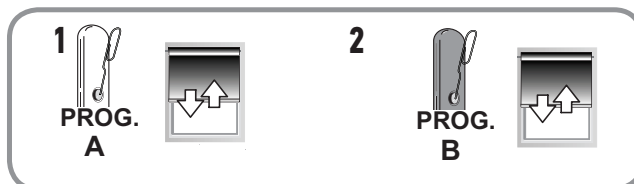
3. 7. 1. Adding/Deleting Control point



i Green LED blinks fast when adding or deleting remote control

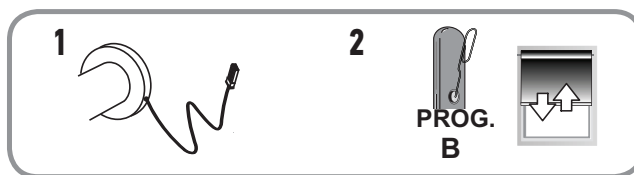
Using a control point (A) that has been previously programmed to the driven product:

- 1) Press and hold the control point programming button (A) until driven product briefly moves Up and Down.
- 2) Quickly press the programming button on the back of the new control point (B) to add or delete control point.



Using the Programming button on motor head:

- 1) Press and hold the motor head programming button until driven product briefly moves Up and Down.
- 2) Quickly press the control point programming button (B) to add or delete control point.



3. 7. 2. Disabling/Activating “RTS” radio technology when control point completely is programmed

i Disabling the radio transmission saves battery life during shipment or for a long period of non-use (eg storage). The following steps can only be performed in “User” mode.

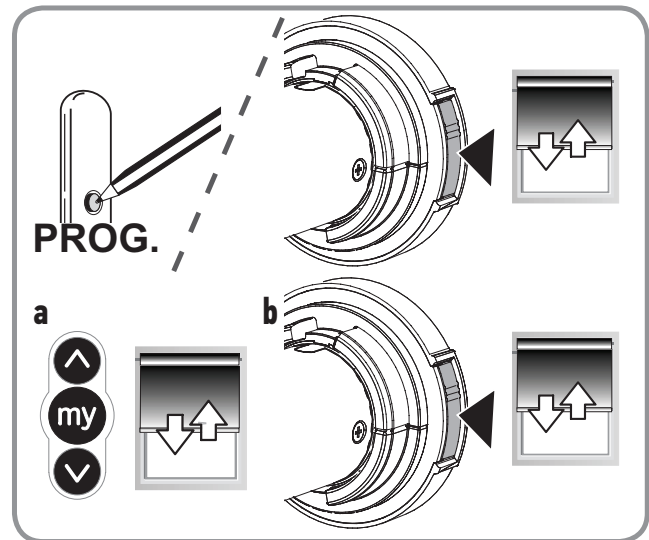
Press and hold the programmed control point programming button or the motor head programming button until the driven product briefly moves Up and Down. (Motor is in programming mode)

TO DEACTIVATE RTS RADIO TECHNOLOGY:

a) Press the UP, MY and DOWN simultaneously until the driven product briefly moves UP and Down once.

TO ACTIVATE RTS RADIO TECHNOLOGY:

b) Briefly press the motor head programming button, the driven product briefly moves UP and Down once.



4. TECHNICAL DATA

Power supply	12 Vdc SELV
Frequency bands and maximum power used	433,42 MHz
Torque	2 Nm
Speed	10-28 RPM
Safety level	III
Operating temperature	0°C to + 60°C
Protection rating	IP 20 (For indoor use only)

i For additional information on the technical data for this drive contact your Somfy representative.

CE SOMFY ACTIVITES SA, F-74300 CLUSES as manufacturer hereby declares that the drive covered by these instructions and used as intended according to these instructions is in compliance with the essential requirements of the applicable European Directives and in particular of the Machinery Directive **2006/42/EC**, and the Radio Directive **2014/53/EU**.

The full text of the EU declaration of conformity is available at www.somfy.com/ce.

Antoine Crézé, Approval manager, acting on behalf of Activity director, Cluses, 07/2017.



Damaged electric products and batteries should not be disposed of with normal household waste. Make sure to drop them in specially provided containers or at an authorized organization that will ensure they are recycled.